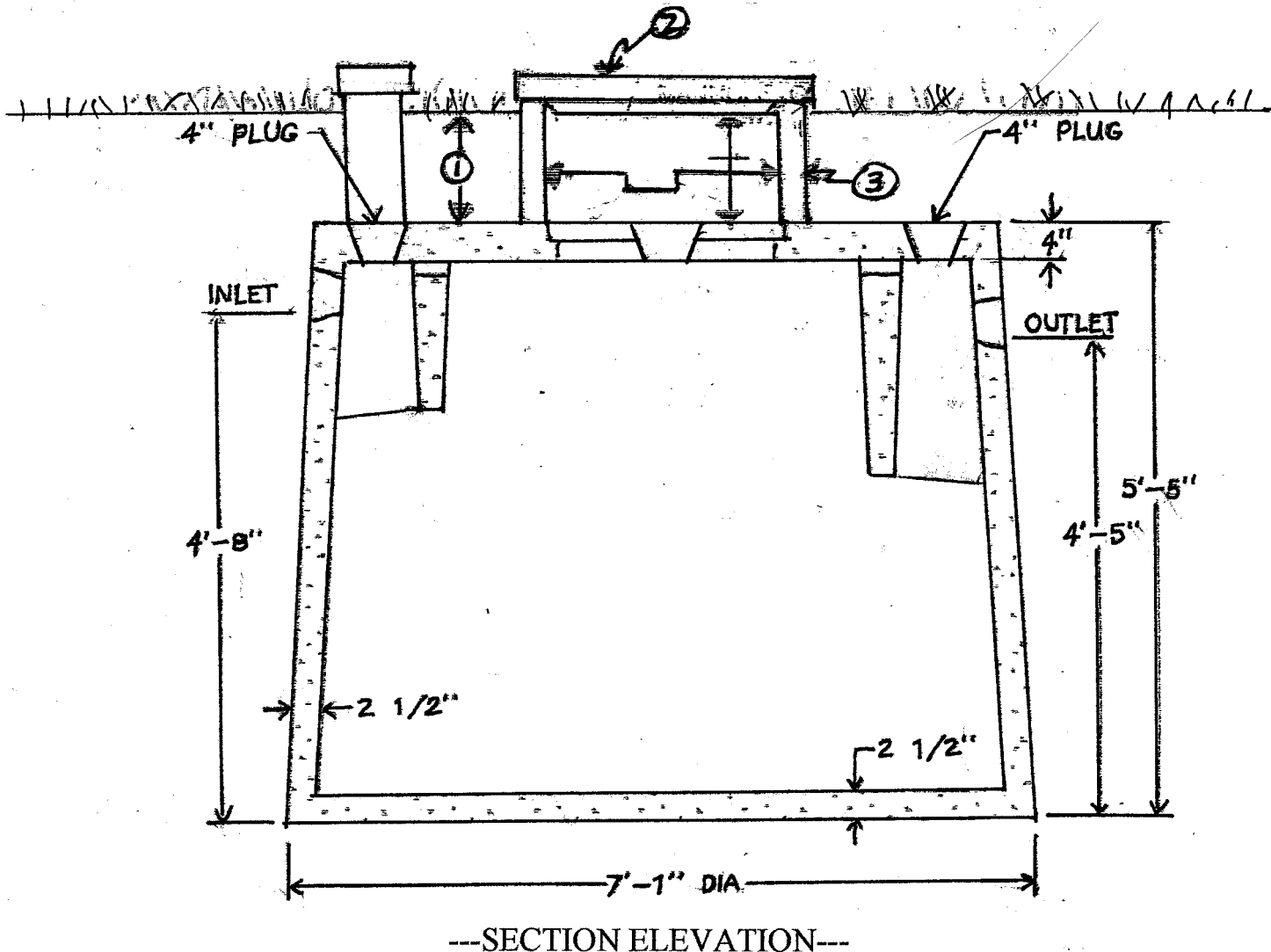


TYPICAL SEPTIC TANK

Access to each tank or compartment of the tank shall be provided by a manhole with an inside dimension of at least 20 inches square (20X20) or in diameter, with a removable cover prior to inspection. Grade level access covers shall be secured by bolts or locking mechanisms, or have sufficient weight to prevent unauthorized access.

Manhole must be exposed to inspect tank

If currently below grade, manhole must be brought to grade



- (1) Distance from top of tank to grade
- (2) Description of lid (material, how secured, of sufficient weight..)
- (3) Description of riser (material of which constructed and height and width. measurement)

4" INSPECTION
PORT

FINISH GRADE

20" DIA. MANHOLES

INLET

65"

54"

4"

MOLDED POLYETHYLENE
BAFFLES

POLYETHYLENE
DEFLECTOR
BAFFLE

OUTLET

51"

3"

3"

136" x 68"

